

# Your DxO ONE

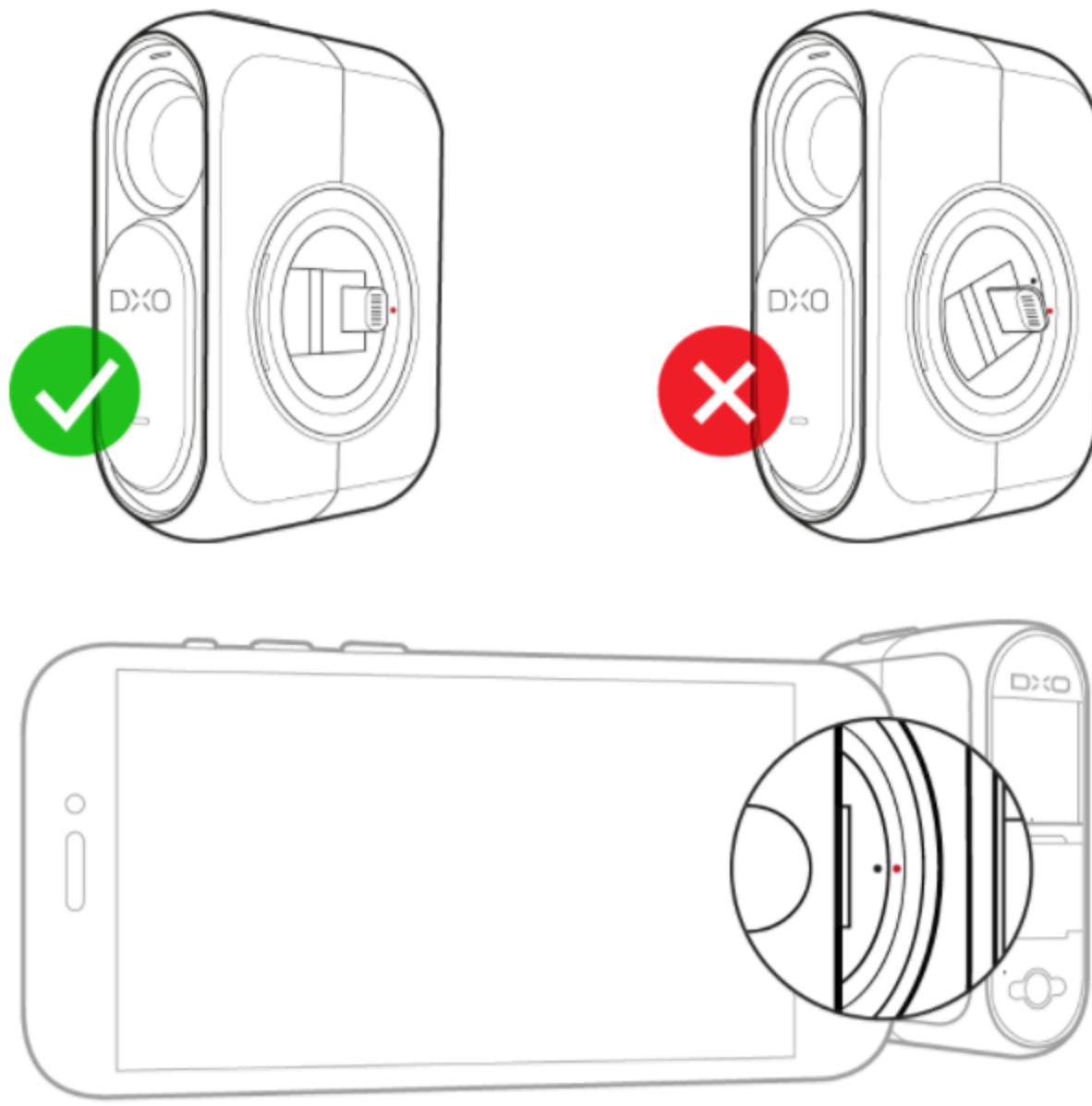
Home / Your DxO ONE / Closing the Lightning connector



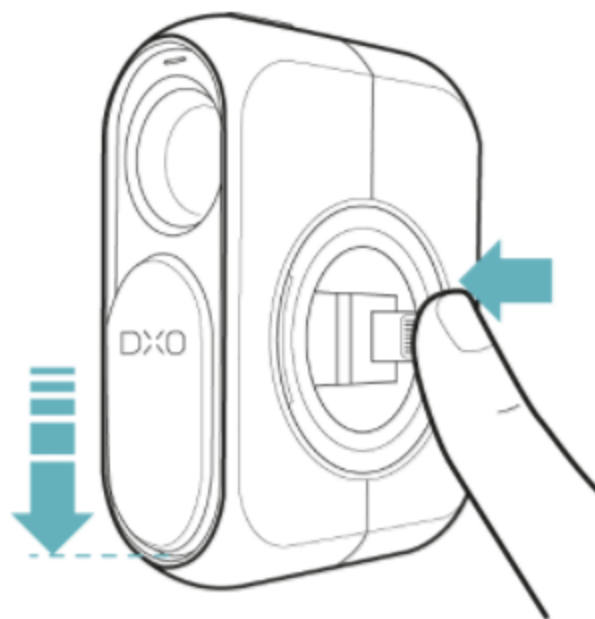
## Closing the Lightning connector

Your DxO ONE

- Before you unplug the DxO ONE from your iPhone, line up the Lightning connector using the indicators on the circular ring. The black dot must be in line with the red dot. You'll hear a slight click when the dots are lined up.

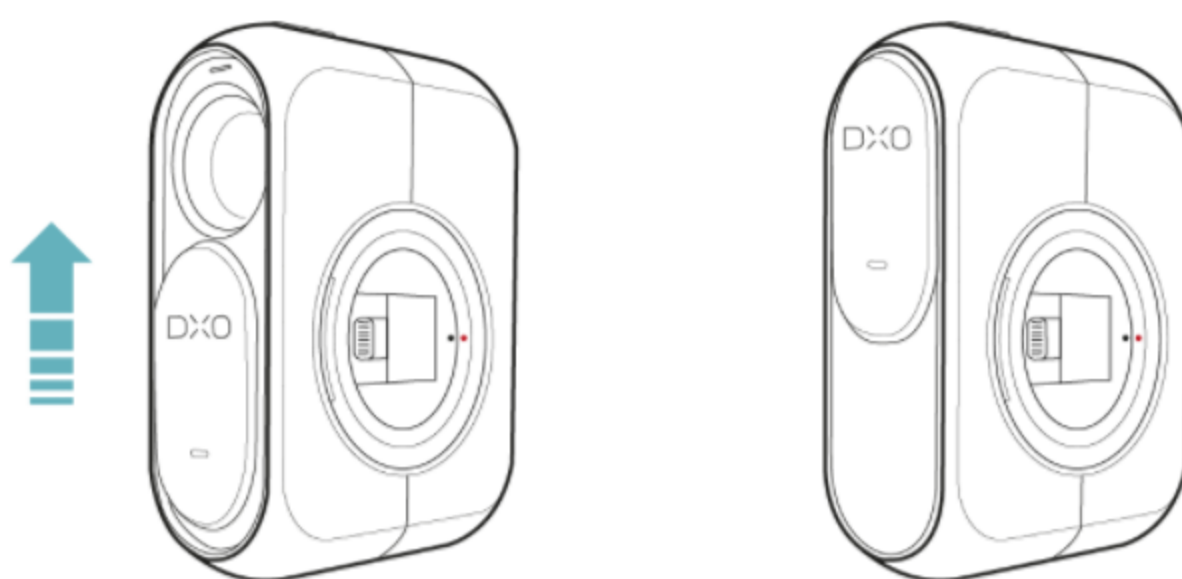


- Once the black and red dots are lined up, unplug your DxO ONE, then slide the lens cover all the way down. Hold it there and fold the connector back into its recess.



You shouldn't have to force the connector into its recess. If you feel resistance, make sure the black and red dots on the circular ring are correctly lined up. If necessary, plug your iPhone back on to help you turn the connector.

- Once the connector is stowed away, release the lens cover, then let go of the connector. Slide the lens cover up to turn the camera off.



Although experienced users can do this using just one hand, it's generally easier to operate the lens cover with one hand and the connector with the other.

### LANGUAGES

- Français
- Deutsch
- Español
- 日本語

### RELATED POSTS

No related post

< OPENING THE LIGHTNING CONNECTOR

CHECKING THE BATTERY LEVEL AND CHARGING >

Receive our newsletter

SUBSCRIBE

Follow us



Choose your language



#### DxO ONE

Overview  
Image quality  
iOS App  
Design  
Press & Testimonials  
Find a retailer

#### PHOTO SOFTWARE

DxO PhotoLab  
DxO FilmPack  
DxO ViewPoint

#### PRESS & TESTIMONIALS

DxO ONE Camera  
Photo Software

#### LEARN AND SUPPORT

Product How-To's  
Support  
Forum  
Software Registration

#### COMPANY

About  
Careers  
Press  
Contact

#### SHOP

DxO ONE Camera & Accessories  
Photo Software  
Find a Retailer  
My Account

#### VISIT OUR

PARTNER SITES :

DxOMark ↗

Imaging Quality ↗